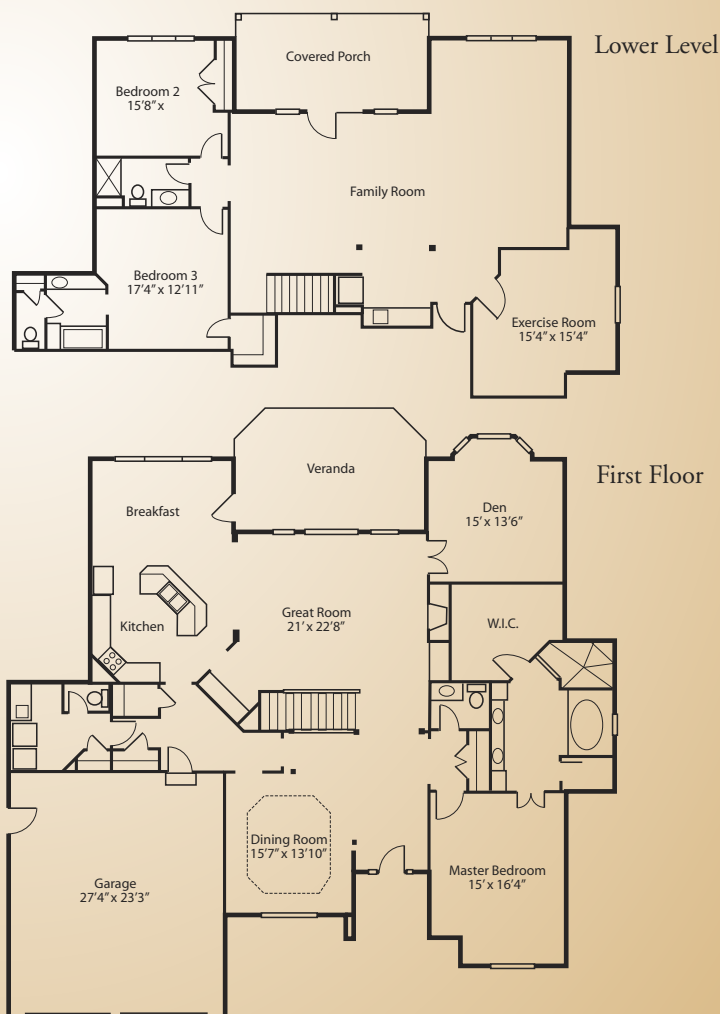


SOLD



5478 GRAND LEGACY

Quality living on the TPC Golf Course presented by award-winning Pinnacle Building Group. This three bedroom, three full/two half bath custom designed home showcases a beautiful, open floor plan. Featuring a spacious great room, formal dining room and private study. Gourmet kitchen offers abundant cabinetry and work island, and adjoins to a sunlit breakfast nook with access to a covered veranda. First floor master suite highlights a relaxing, luxury bath with sizeable, walk-in closet. Finished lower level features a spacious family room, exercise room, two additional bedrooms and access to a covered patio, with a walk-out to a beautiful lot. A great opportunity to live in the River's Bend Community, this spectacular home is available for immediate occupancy. Call today for additional information.



Pinnacle



Building Group
Custom Homes
By Jeff Olinger

"We choose to be the best, rather than the biggest"

