



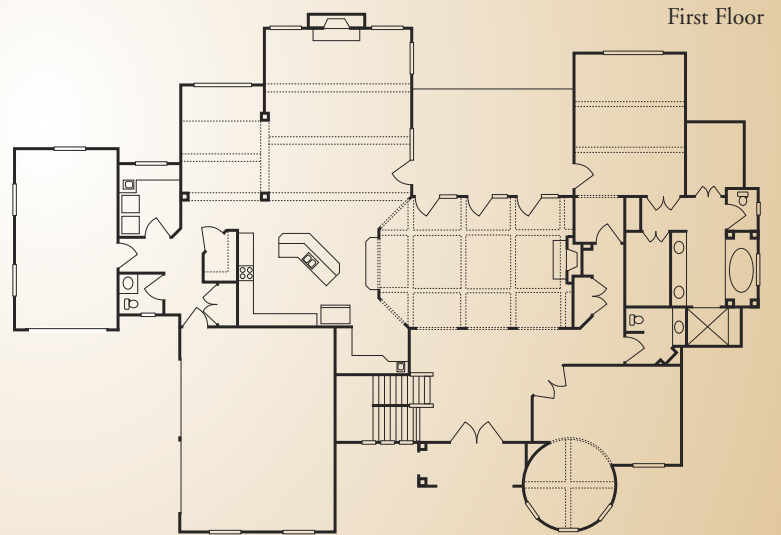
**8857 Bayside Court
Long Cove**

ALSACE

\$1,590,000

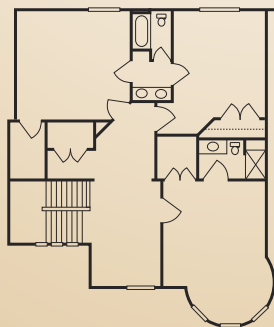
Homearama Show Home – 19 rooms • 5 bedrooms • 4 full/3 half baths

Discover the beauty and charm of this French Eclectic style home, nestled in a quiet, waterway community. Exquisite craftsmanship and artfully designed features are expressed through incredible architectural details including a beautiful limestone entry, interior stone arches, hardwood floors, three custom designed fireplaces and a first floor wine bar. Open floor plans and large, sun-drenched rooms are perfect for entertaining, while also lending a comfortable atmosphere for everyday living. The home's spacious main floor features a luxury master suite with adjacent veranda, gourmet kitchen and formal living and dining areas. A first floor private study tucked into one of two unique turret rooms showcases a coffered ceiling and offers a quiet respite. The home's second floor features three large bedrooms with two private baths, while an additional guest bedroom suite is located on the home's lower level. A sizeable, lower level family/media room features a stone fireplace, and provides access to a wooded walk-out and beautiful, two-story paver outdoor entertaining area. Offering 7,950 square feet of living space, this stunning home is located in Long Cove in Deerfield Township/Mason school district.

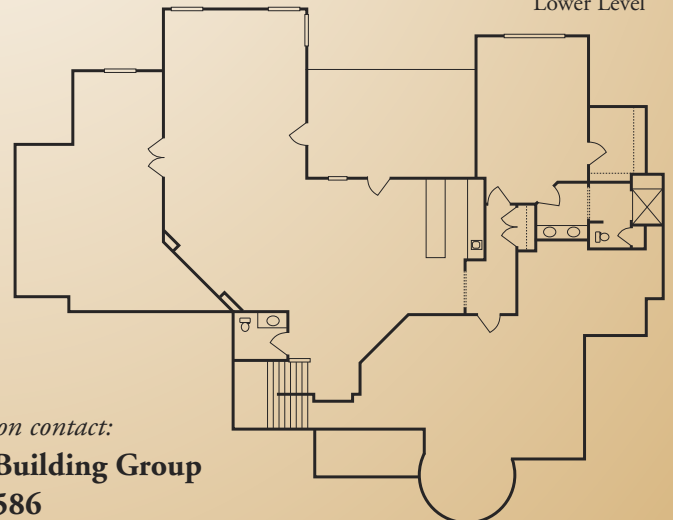


First Floor

Second Floor



Lower Level



Pinnacle



Building Group
Custom Homes
By Jeff Olinger

For more information contact:

Jeff Olinger, Pinnacle Building Group
513.791.7586

pinnaclebuildinggroup.com

"We choose to be the best, rather than the biggest"



LONG COVE SITE MAP

We will build on your personal homesite!

Pinnacle



Building Group
Custom Homes
By Jeff Olinger

For more information contact:

Jeff Olinger, Pinnacle Building Group

513.791.7586

pinnaclebuildinggroup.com

This brochure is for illustration purposes only and not part of a legal binding contract.

